



Aerial archaeological investigations on the Eastern limes of Dacia in 2007-2010

Zsolt Visy – Máté Szabó – Szilamér Pánczél



Frontiers of the Roman Empire

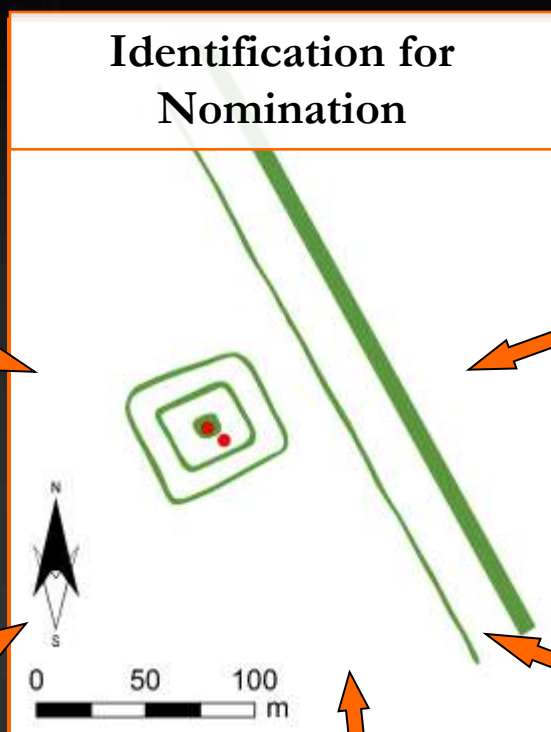
World Heritage Site



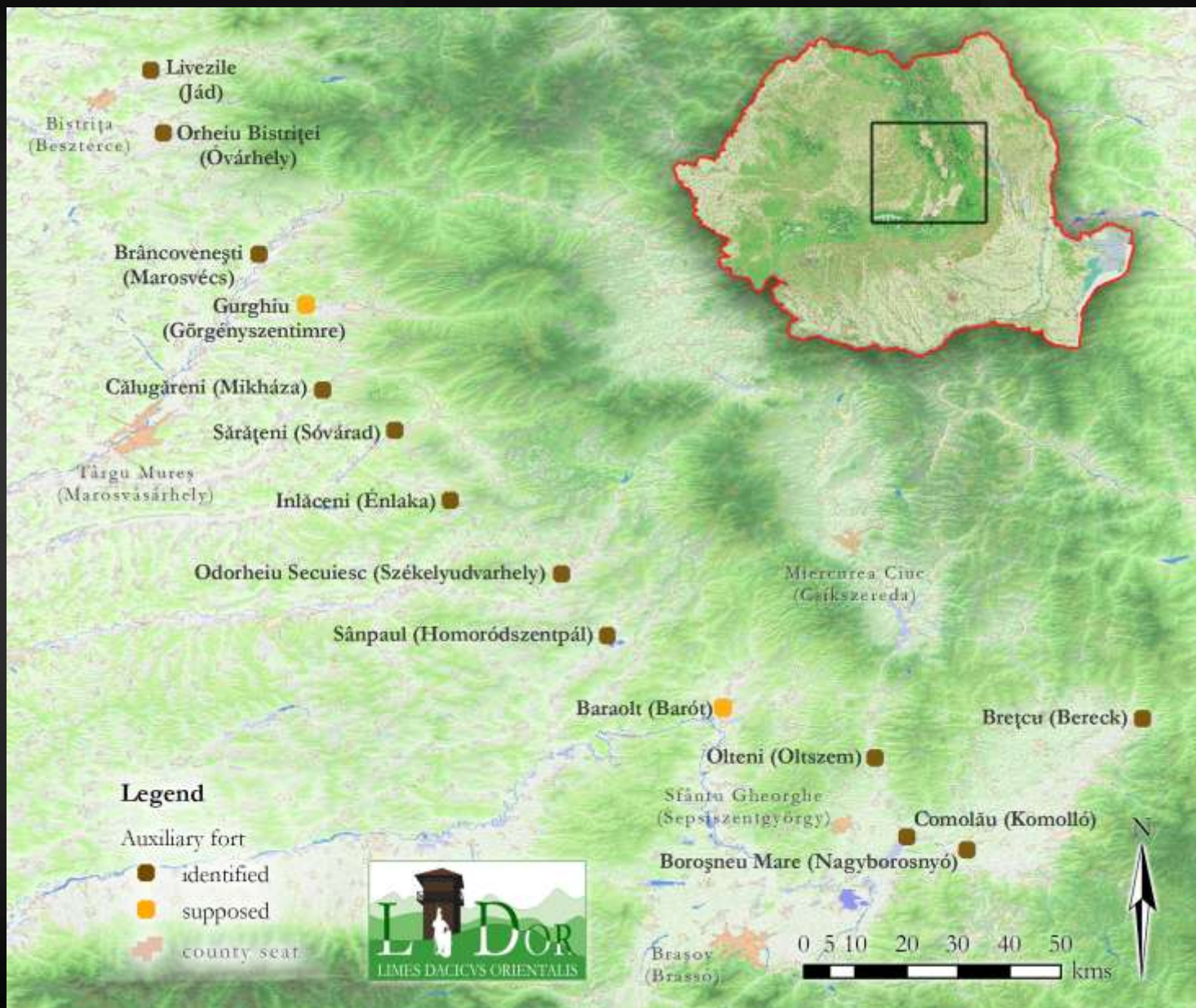
Aerial survey along the Danube

- Systematic research along the Danube (Culture 2000 and Danube-Limes programs)
- for 5 years (2007-2011)
- more than 2000 images from the *limes*





The Eastern *limes* of Dacia

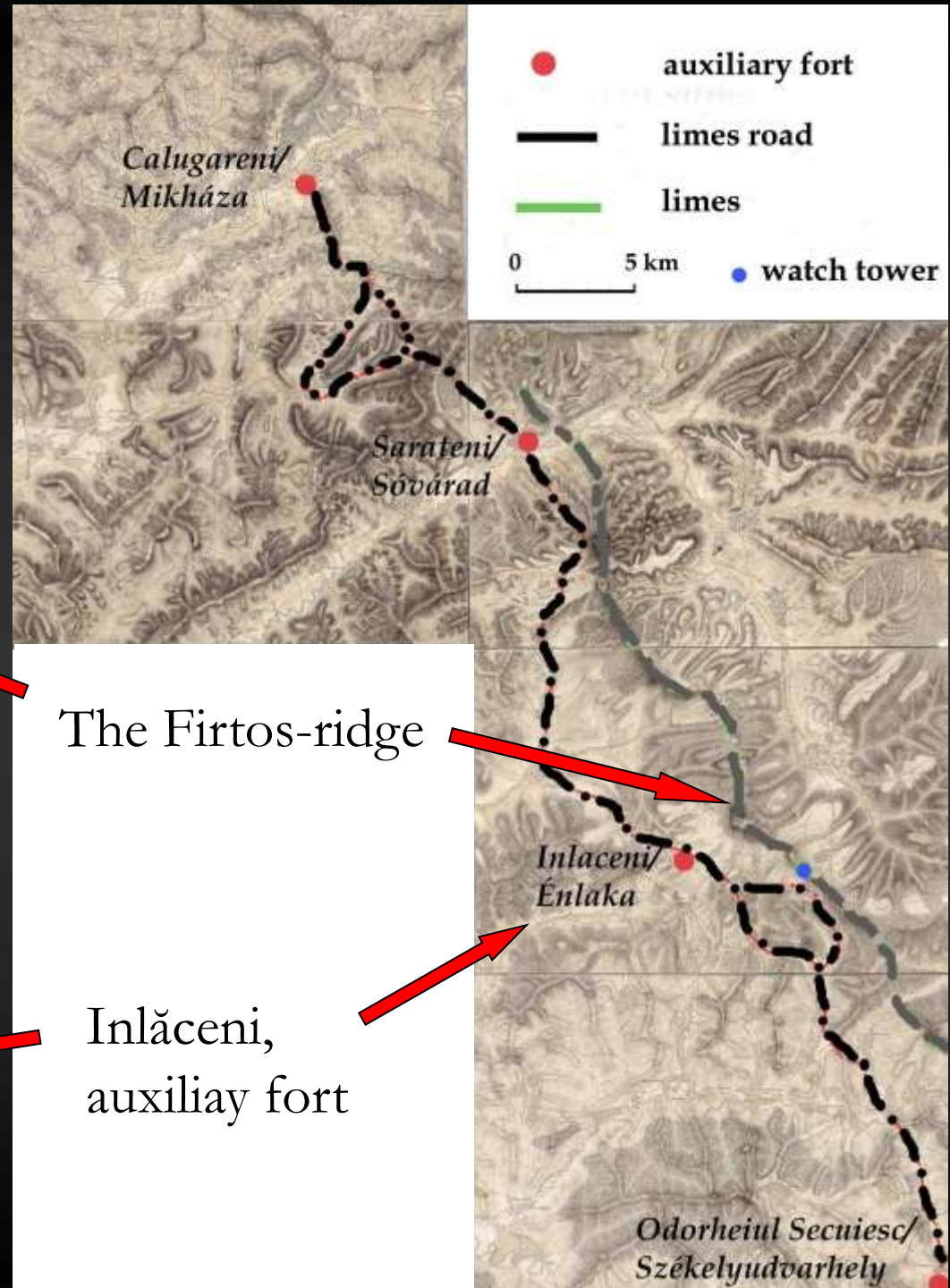




The Roman forts



The hypothethic system of the Eastern *limes* of Dacia



The Firtos-ridge

Inlăceni,
auxiliay fort

- auxiliary fort
- limes road
- limes
- 0 5 km
- watch tower

Calugareni/
Mikháza

Sarateni/
Sóvárád

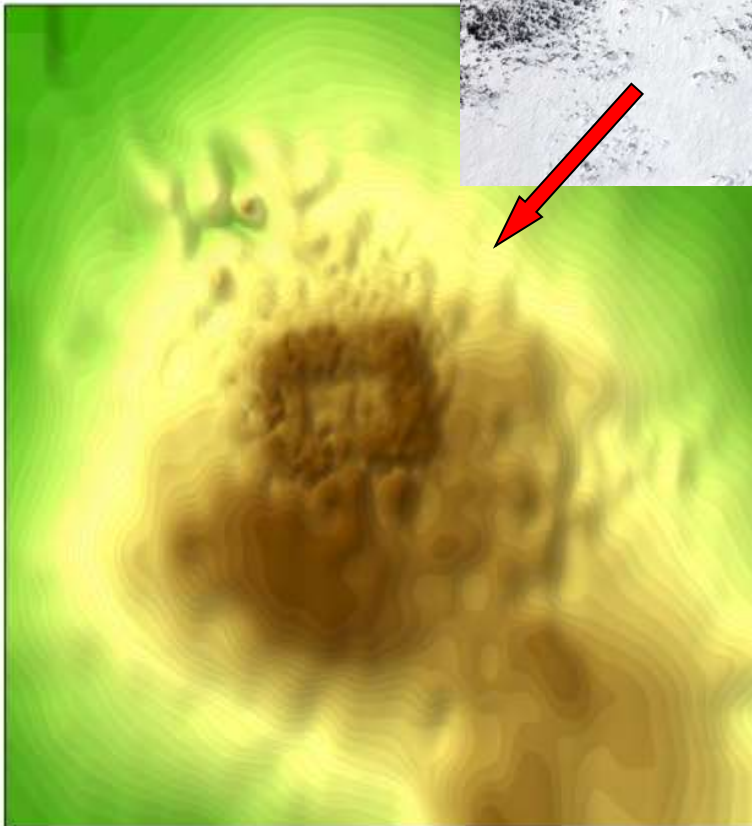
Inlăceni/
Énlaka

Odorheiul Secuiesc/
Székelyudvarhely

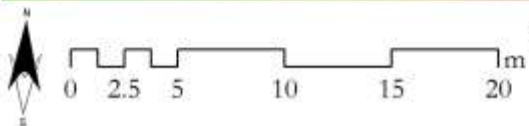
The first result...



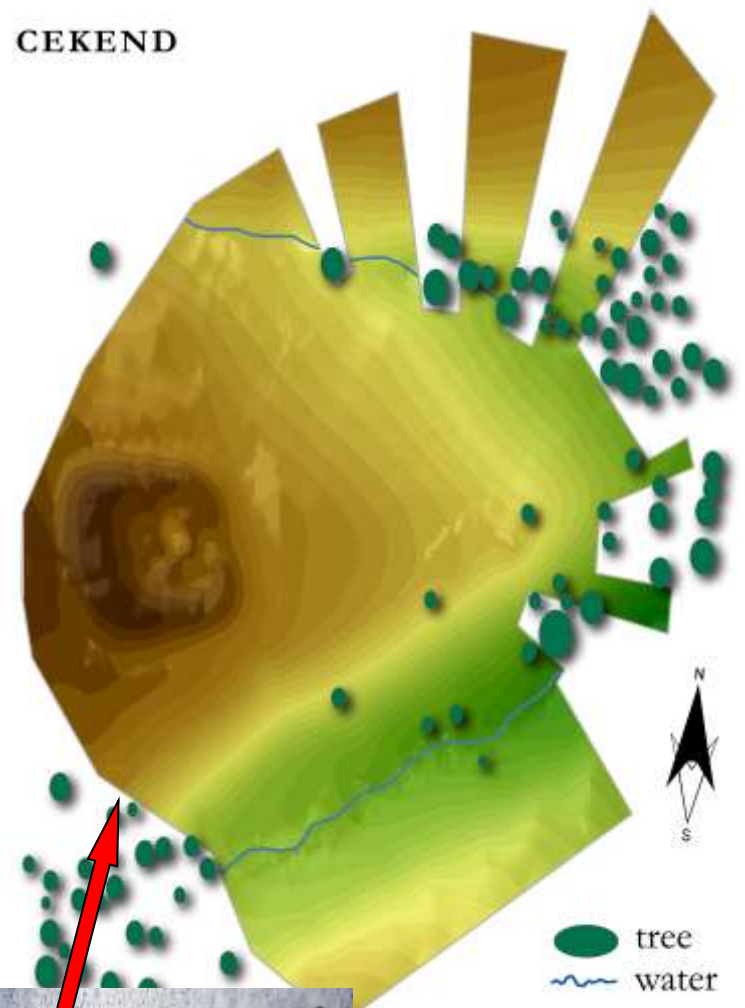
Without answers...



SZILAS

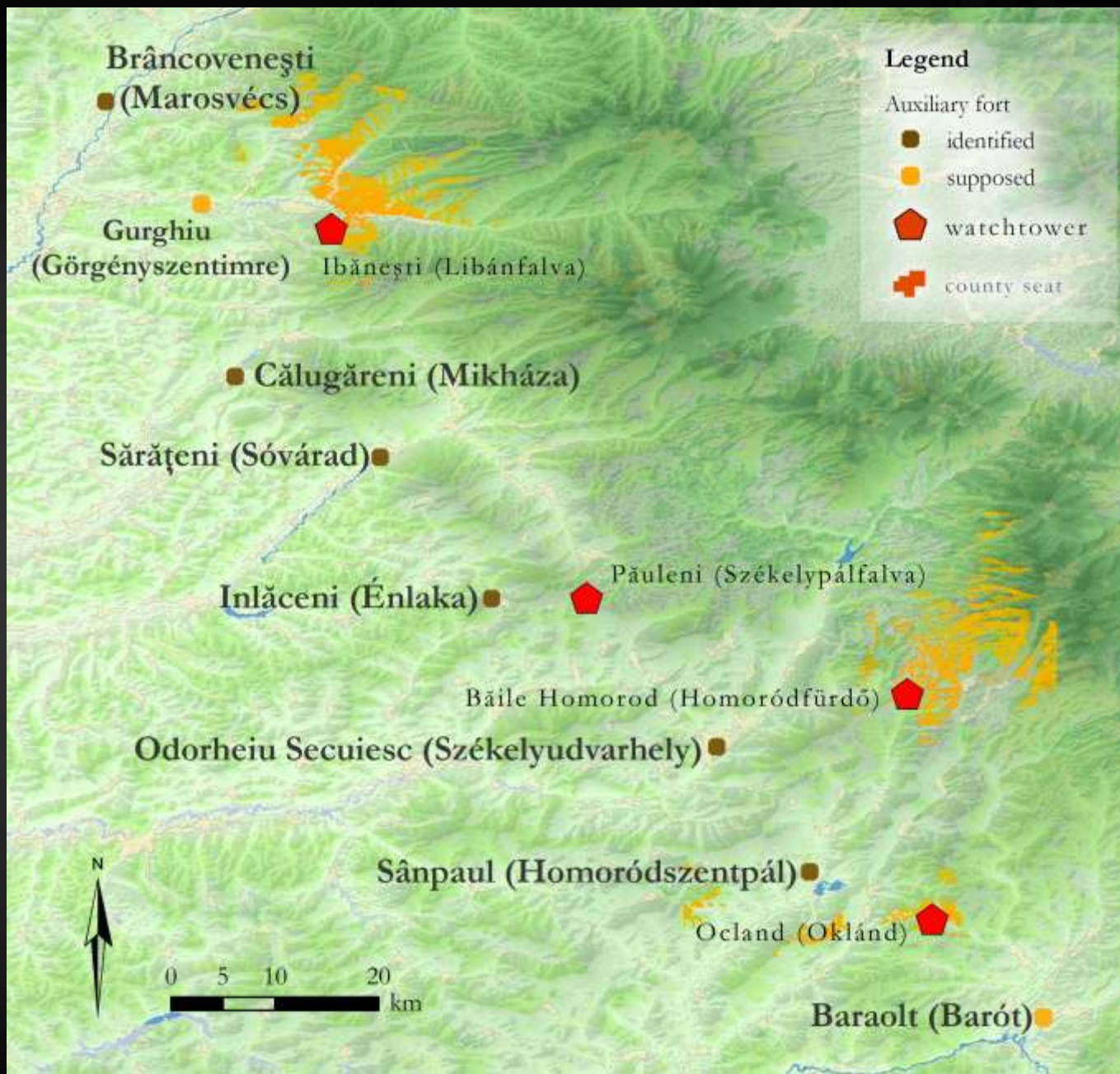


CEKEND



tree
water





Thank you for your attention!

